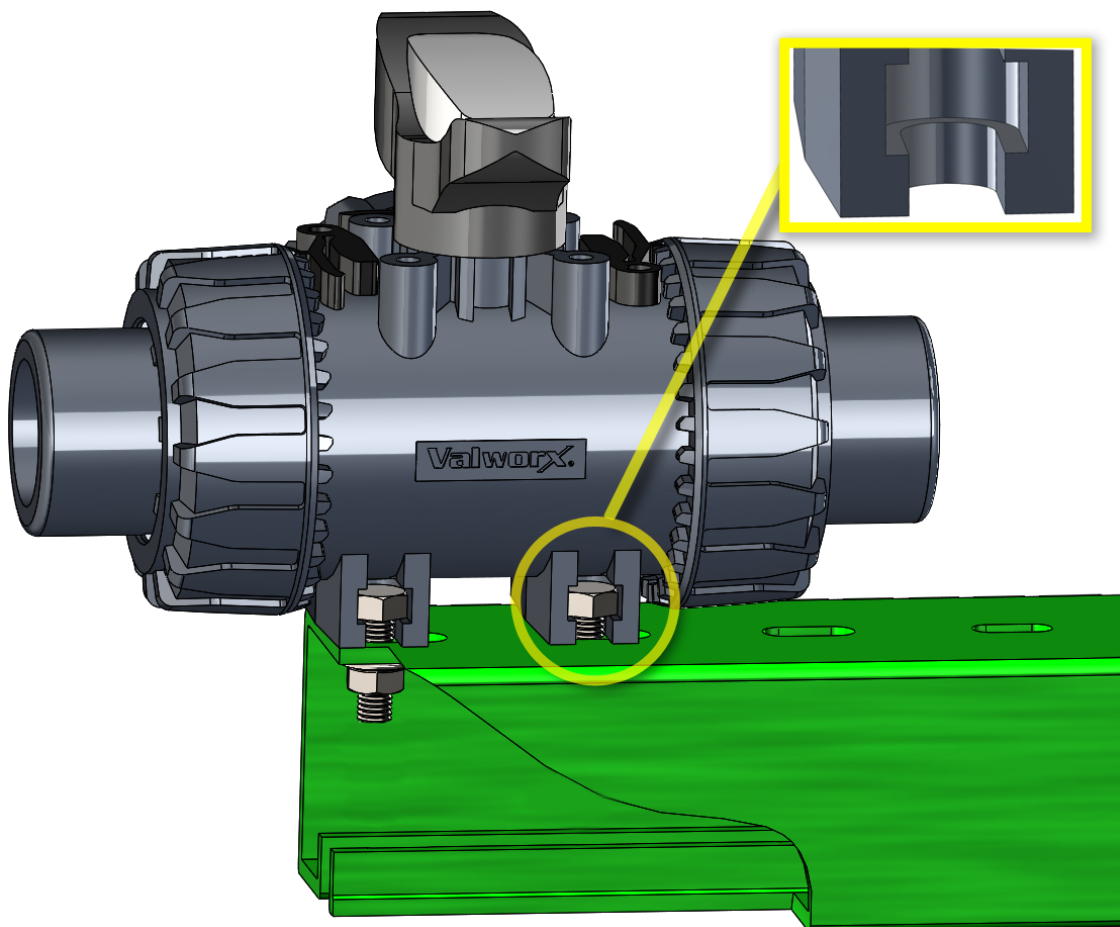




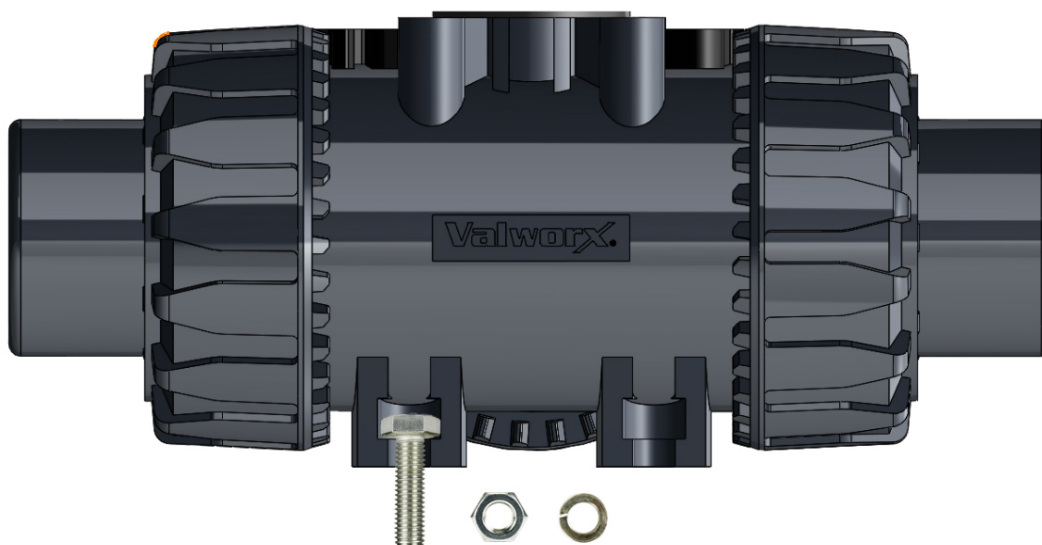
# Pro Tips

## PVC Valve Wall or Panel Mounting

Valworx PVC valves have a built-in feature for wall or panel mounting capability for specific size valves.



- Place bolts in the (4) slots in the bottom/side of the valve as shown.
- The head of the HEX HEAD bolt slides into the squared off slot, and the threaded portion drops downward in photos as shown.
- Using a matching Washer & Nut, attach bolt through a wall or plate, and tighten.
- Length of the bolt will vary based on thickness of bracketry.



**\*Feature is only available on the following valve types/ sizes\* (chart below)**

Bolt Size	Valve Type 2-Way
M6-HHCS	2-1/2"
M8-HHCS	3"
M8-HHCS	4"

Bolt Size	Valve Type 3-Way
M5-HHCS	1/2"
M5-HHCS	3/4"
M5-HHCS	1"
M6-HHCS	1-1/4"
M6-HHCS	1-1/2"
M6-HHCS	2"

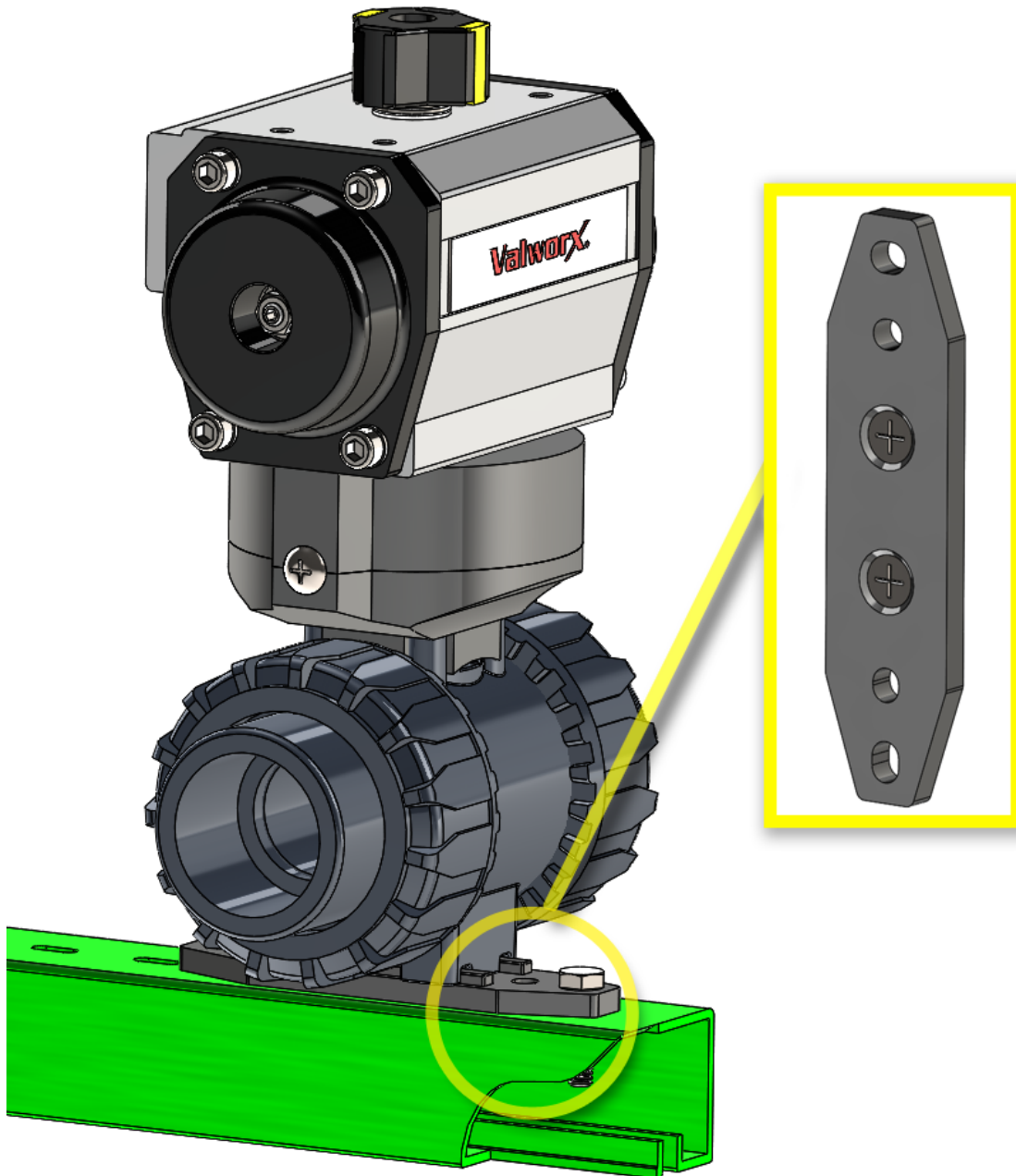
**2-Way PVC Ball Valves**

**3-Way PVC Ball Valves**

## Valworx PVC Wall Mounting Kit Accessory

(available for 2-way sizes 1/2"-2")

PVC Wall Mount Kit allows easy mounting



Valve sizes not listed above will require a Wall Mounting Kit accessory (sold on [Valworx.com](http://Valworx.com)).

PVC wall or panel mounting bracket mounts to the bottom of a 5510 series 2-way ball valve providing a method of mounting the valve. Kit includes components shown.



**1/2" to 1" PVC Wall Mounting Kit**

**1-1/4" to 2" PVC Wall Mounting Kit**



---

*Copyright © 2019 Valworx Inc., All rights reserved.*

Want to change how you receive these emails?  
You can [update your preferences](#) or [unsubscribe from this list](#).